



Daydream

Blossom Batik collection by RJR Fabrics



Finished quilt measures 50" x 62"

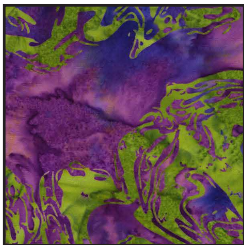


#quiltwithlove

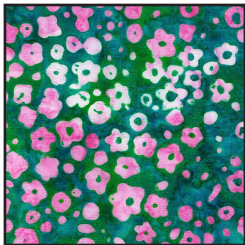
Flaura Color Card (1 OF 3)

Blossom Batik fabric collection

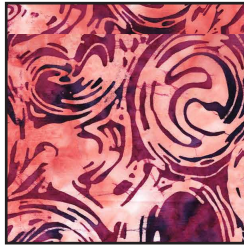
Fabric A
#2805_002



Fabric E
#2806_002



Fabric I
#2807_005



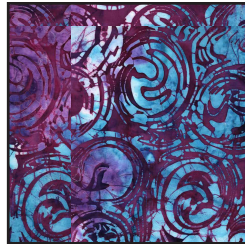
Fabric M
#2808_007



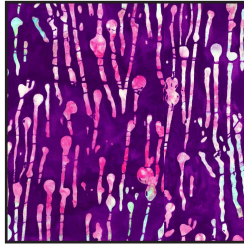
Fabric B
#2805_003



Fabric F
#2807_002



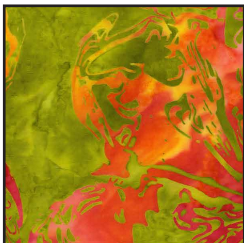
Fabric J
#2808_002



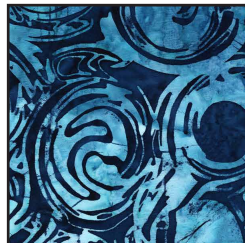
Fabric N
#2809_001



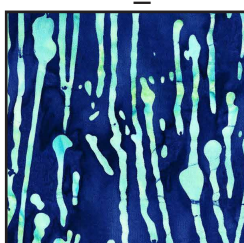
Fabric C
#2805_004



Fabric G
#2807_003



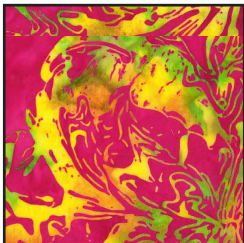
Fabric K
#2808_004



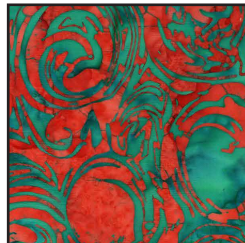
Fabric O
#2809_002



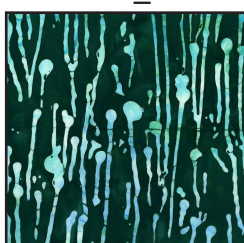
Fabric D
#2805_005



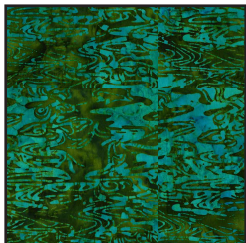
Fabric H
#2807_004



Fabric L
#2808_006

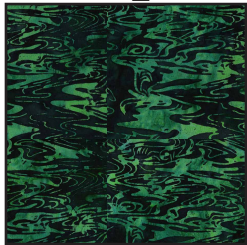


Fabric P
#2809_003

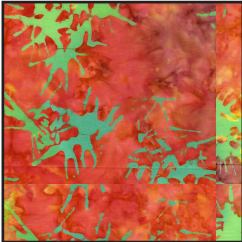


Flaura Color Card (2 OF 3)
Blossom Batik fabric collection

Fabric Q
#2809_004



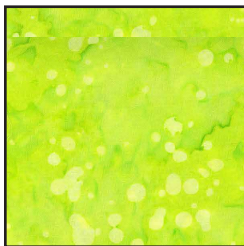
Fabric U
#2810_004



Fabric Y
#2811_005



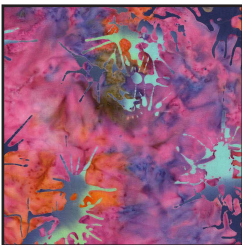
Fabric CC
#2812_005



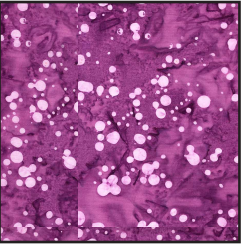
Fabric R
#2809_005



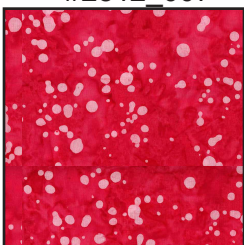
Fabric V
#2810_005



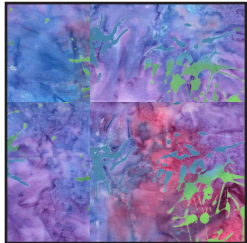
Fabric Z
#2812_002



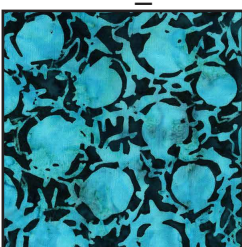
Fabric DD
#2812_007



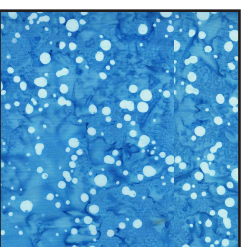
Fabric S
#2810_002



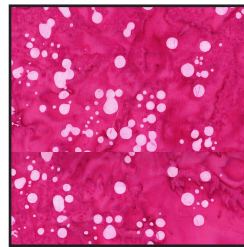
Fabric W
#2811_002



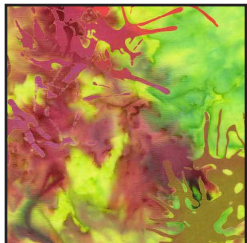
Fabric AA
#2812_003



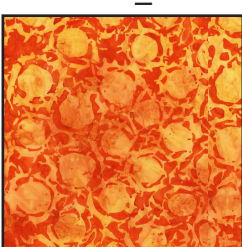
Fabric EE
#2812_008



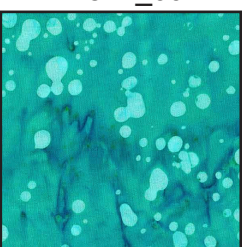
Fabric T
#2810_003



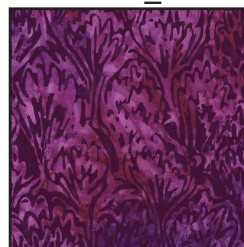
Fabric X
#2811_004



Fabric BB
#2812_004



Fabric FF
#2813_002

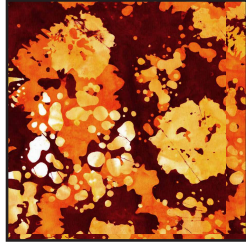


Flaura Color Card (3 OF 3)
Blossom Batik fabric collection

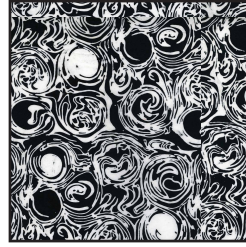
Fabric GG
#2813_003



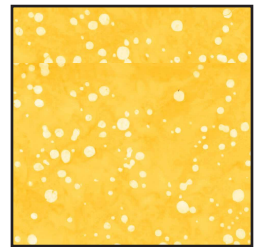
Fabric KK
#2814_004



Fabric OO
#2807_001



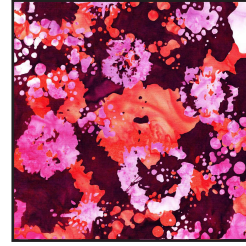
Fabric SS
#2812_006



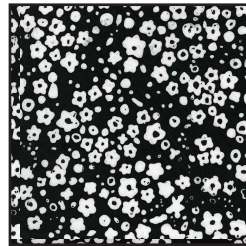
Fabric HH
#2813_004



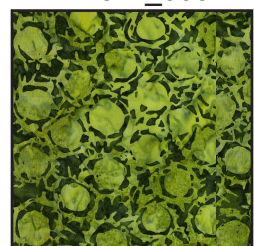
Fabric LL
#2814_005



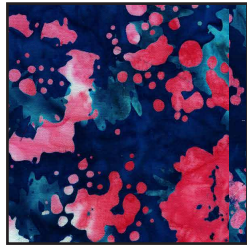
Fabric PP
#2806_001



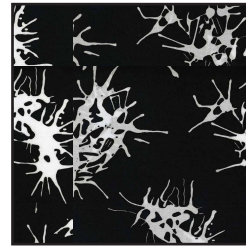
Fabric TT
#2811_003



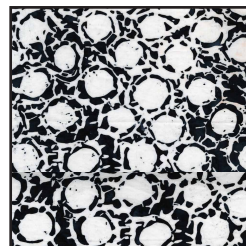
Fabric II
#2814_002



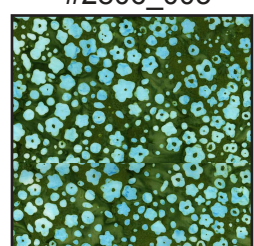
Fabric MM
#2810_001



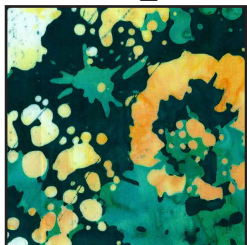
Fabric QQ
#2811_001



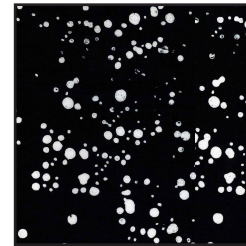
Fabric UU
#2806_003



Fabric JJ
#2814_003



Fabric NN
#2812_001



Fabric RR
#2813_005



Yardage Requirements

(Blossom Batik collection)

Fat eighth each:

Fabric A - #2805_002
Fabric C - #2805_004
Fabric F - #2807_002
Fabric H - #2807_004
Fabric J - #2808_002
Fabric K - #2808_004
Fabric I - #2807_005
Fabric O - #2809_002
Fabric R - #2809_005
Fabric V - #2810_005
Fabric Y - #2811_005
Fabric Z - #2812_002
Fabric DD - #2812_007
Fabric EE - #2812_008
Fabric FF - #2813_002
Fabric II - #2814_002
Fabric KK - #2814_004
Fabric LL - #2814_005

Fat quarter each:

Fabric B - #2805_003
Fabric D - #2805_005
Fabric E - #2806_002
Fabric L - #2808_006
Fabric S - #2810_002
Fabric T - #2810_003
Fabric U - #2810_004
Fabric W - #2811_002
Fabric X - #2811_004
Fabric AA - #2812_003
Fabric BB - #2812_004
Fabric CC - #2812_005
Fabric GG - #2813_003
Fabric HH - #2813_004
Fabric JJ - #2814_003
Fabric OO - #2807_001
Fabric RR - #2813_005
Fabric SS - #2812_006
Fabric UU - #2806_003

1/4 yard each:

Fabric G - #2807_003
Fabric M - #2808_007
Fabric P - #2809_003

1/3 yard each:

Fabric PP - #2806_001
Fabric TT - #2811_003

1/2 yard each:

Fabric N - #2809_001 for binding
Fabric Q - #2809_004

5/8 yard each:

Fabric MM - #2810_001
Fabric NN - #2812_001

2/3 yard Fabric QQ - #2811_001

4 yards backing fabric

Fusible web

Pressing cloth

Basic sewing supplies

Cutting

From Fabric A

One 2-1/2" x 11-1/2" piece

One 3-1/2" x 9-1/2" piece

From Fabric B

One 2-1/2" x 10-1/2" piece

One 8-1/2" x 9-1/2" piece

From Fabric C

One 7-1/2" x 10-1/2" piece

From Fabric D

One 8-1/2" x 12-1/2" piece

One 4-1/2" square

From Fabric E

One 6-1/2" x 7-1/2" piece

One 5" x 6" piece

One 4-1/2" x 10-1/2" piece

One 3" x 10" piece

One 3" x 8-1/2" piece

One 2-1/2" x 5-1/2" piece

From Fabric F

One 5-1/2" x 8-1/2" piece

One 4-1/2" x 8-1/2" piece

Fabric G

One 7-1/2" x 9" piece

One 4" x 8-1/2" piece

Fabric H

One 3-1/2" x 8-1/2" piece

One 3-1/2" x 6-1/2" piece

Fabric I

Two 4-1/2" x 5-1/2" pieces

Fabric J

One 5-1/2" x 9" piece

One 1-1/2" x 4" piece

Fabric K

One 5-1/2" x 14-1/2" piece

Fabric L

One 4-1/2" x 19-1/2" piece

One 4-1/2" x 10-1/2" piece

One 5-1/2" x 6-1/2" piece

One 3-1/2" x 4-1/2" piece

Fabric M

One 4-1/2" x 10-1/2" piece

One 2-1/2" x 21-1/2" piece

Fabric N

Six 2-1/2" x 42" strips for binding

Fabric O

One 5-1/2" x 6-1/2" piece

One 3-1/2" x 8-1/2" piece

One 2-1/2" x 7-1/2" piece

Fabric P

One 2-1/2" x 10-1/2" piece

(Reserve remainder for appliques)

Fabric Q

One 4-1/2" x 8-1/2" piece

(Reserve remainder for appliques)

Fabric R

One 3" x 7-1/2" piece

One 3" x 5-1/2" piece

Fabric S

One 10-1/2" x 11-1/2" piece

Fabric T

One 6-1/2" x 14-1/2" piece

One 6-1/2" x 10-1/2" piece

One 3-1/2" x 5-1/2" piece

Fabric U

One 9-1/2" x 10-1/2" piece

One 5-1/2" square

One 3-1/2" x 5-1/2" piece

One 2-1/2" x 4-1/2" piece

Fabric V

One 6-1/2" x 11-1/2" piece

Fabric W

One 10-1/2" x 11-1/2" piece

Fabric X

One 5-1/2" x 16-1/2" piece

One 4-1/2" x 6-1/2" piece

Fabric Y

One 5-1/2" x 7-1/2" piece

Fabric Z

One 5" x 8-1/2" piece

One 2-1/2" x 14" piece

One 3" x 2-1/2" piece

Fabric AA

One 8-1/2" x 10-1/2" piece

One 3" x 12-1/2" piece

One 2-1/2" square

One 2" x 8-1/2" piece

One 1-1/2" x 9" piece

Fabric BB

One 8-1/2" x 11" piece

Fabric CC

One 7-1/2" x 11-1/2" piece

One 2-1/2" x 12-1/2" piece

Fabric DD

One 5-1/2" x 10-1/2" piece

One 4" x 6-1/2" piece

One 2" x 5-1/2" piece

Fabric EE

One 4" x 9-1/2" piece

Fabric FF

One 3-1/2" x 10-1/2" piece

Fabric GG

One 8-1/2" x 9-1/2" piece

One 7-1/2" x 12-1/2" piece

One 3-1/2" x 7-1/2" piece

One 2-1/2" square

Fabric HH

One 7-1/2" x 8-1/2" piece

One 3-1/2" x 12-1/2" piece

Two 2-1/2" squares

Fabric II

One 7-1/2" x 11-1/2" piece

Fabric JJ

One 5-1/2" x 10-1/2" piece

One 3-1/2" x 7-1/2" piece

One 2-1/2" x 8-1/2" piece

Fabric KK

One 4-1/2" x 9-1/2" piece

One 4-1/2" x 8-1/2" piece

Fabric LL

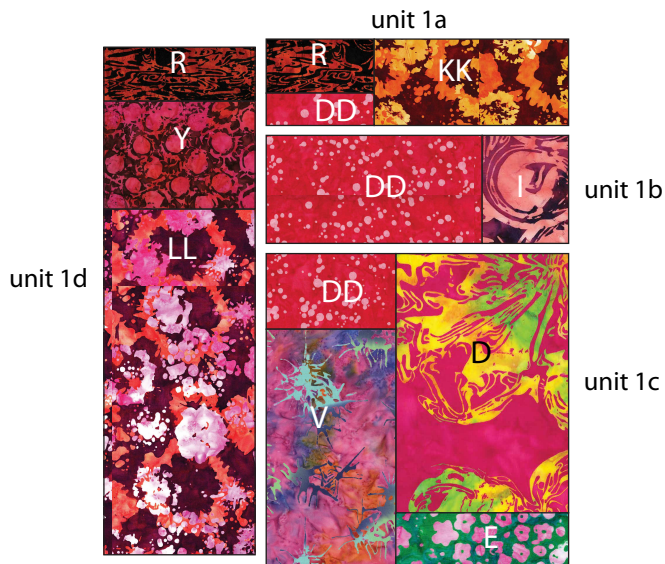
One 7-1/2" x 16-1/2" piece

Preparation

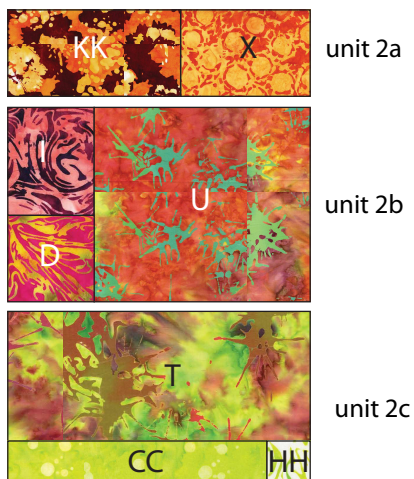
Trace templates onto the paper side of fusible web, labeling as indicated. Note that some templates have a dotted outline--this is just to differentiate templates where layering occurs on the template pages. Cut out each shape 1/4" past the line. Fuse the shapes to the indicated fabric and cut out on the lines. Note the fabric direction arrows on some fabrics and position on fabric accordingly.

Piecing the Background

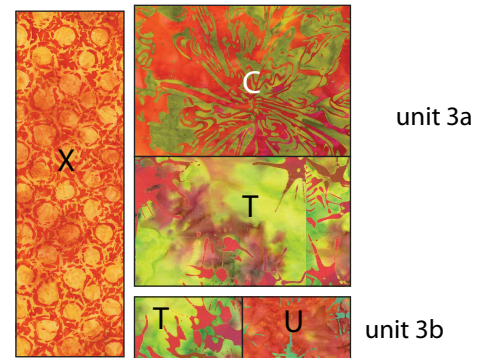
1. *Section 1:* Make unit 1a by sewing a 5-1/2" x 3" R piece to a 5-1/2" x 2" DD piece. Sew a 9-1/2" x 4-1/2" KK piece to the right side. Make unit 1b by sewing a 10-1/2" x 5-1/2" DD piece to a 4-1/2" x 5-1/2" I piece. Make unit 1c by sewing a 6-1/2" x 4" DD piece to a 6-1/2" x 11-1/2" V piece; sew an 8-1/2" x 12-1/2" D piece to an 8-1/2" x 3" E piece. Join the DD/V unit to the D/E unit. Make unit 1d by sewing a 7-1/2" x 3" R piece, a 7-1/2" x 5-1/2" Y piece and a 7-1/2" x 16-1/2" LL piece together. Join units 1a-1c, and then add unit 1d to the left side. Section 1 should measure 21-1/2" x 24".



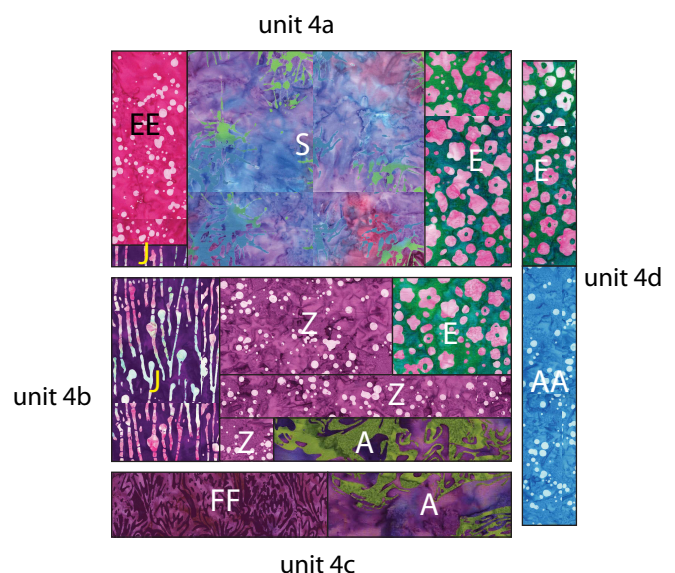
2. *Section 2:* Make unit 2a by sewing an 8-1/2" x 4-1/2" KK piece to a 6-1/2" x 4-1/2" X piece. Make unit 2b by sewing a 4-1/2" x 5-1/2" I piece to a 4-1/2" x 5-1/2" D square. Join the I/D unit to a 10-1/2" x 9-1/2" U piece. Make unit 2c by sewing a 2-1/2" HH square to a 12-1/2" x 2-1/2" CC piece. Sew the CC/H unit to a 14-1/2" x 6-1/2" T piece. Join units 2a-2c. Section 2 should measure 14-1/2" x 21-1/2".



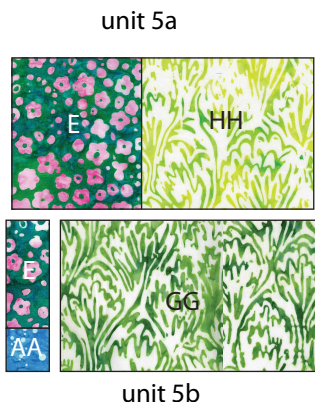
3. *Section 3:* To make unit 3a, sew a 10-1/2" x 7-1/2" C piece to a 10-1/2" x 6-1/2" T piece. To make unit 3b, sew a 5-1/2" x 3-1/2" T piece to a 5-1/2" x 3-1/2" U piece. Join units 3a and 3b, and then sew the 5-1/2" x 16-1/2" X piece to the left side. Section 3 should measure 15-1/2" x 16-1/2".



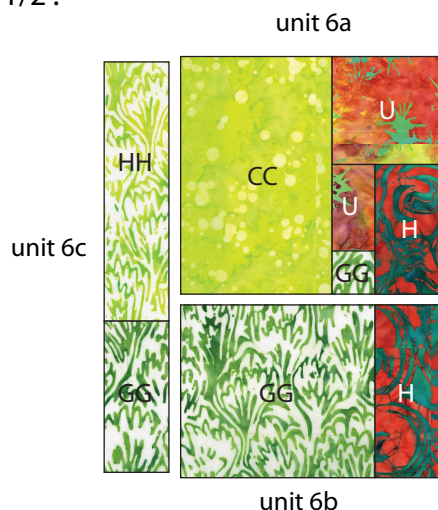
4. *Section 4:* To make unit 4a, sew a 4" x 9-1/2" EE piece to a 4" x 1-1/2" J piece. Sew to the left side of an 11-1/2" x 10-1/2" S piece. Sew a 4-1/2" x 10-1/2" E piece to the right side. To make unit 4b, sew an 8-1/2" x 5" Z piece to a 6" x 5" E piece. Sew a 3" x 2-1/2" Z piece to an 11-1/2" x 2-1/2" A piece. Sew a 14" x 2-1/2" Z piece to the top. Join the Z/E unit to the Z/A/Z unit. Sew a 5-1/2" x 9" J piece to the left side. To make unit 4c, sew a 10-1/2" x 3-1/2" FF piece to a 9" x 3-1/2" A piece. To make unit 4d, sew a 3" x 10" E piece to a 3" x 12-1/2" AA piece. Join units 4a-4c and then sew unit 4d to the right side. Section 4 should measure 21-1/2" x 22".



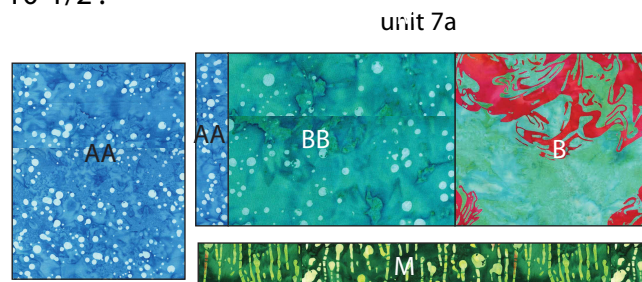
5. *Section 5:* To make unit 5a, sew a 6-1/2" x 7-1/2" E piece to an 8-1/2" x 7-1/2" HH piece. To make unit 5b, sew a 2-1/2" x 5-1/2" E piece to a 2-1/2" AA square, and then sew to the left side of a 12-1/2" x 7-1/2" GG piece. Join unit 5a to 5b. Section 5 should measure 14-1/2" square.



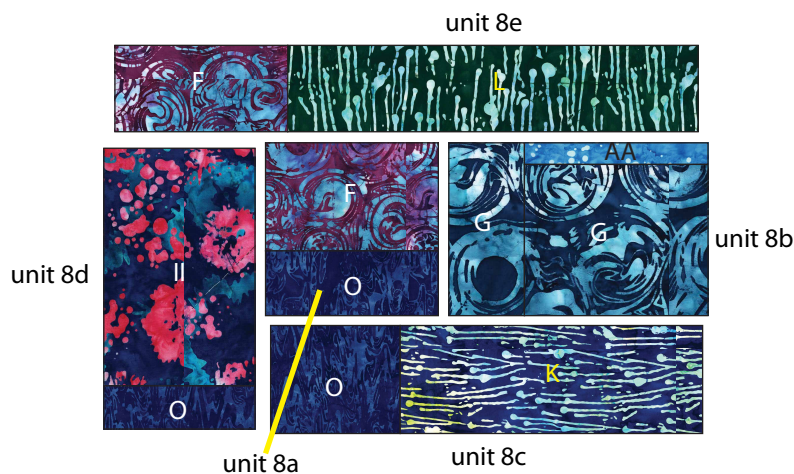
6. *Section 6:* To make unit 6a, sew a 2-1/2" GG square to a 2-1/2" x 4-1/2" U piece. Sew to the left side of a 3-1/2" x 6-1/2" H piece, and sew a 5-1/2" U square to the top, and then add a 11-1/2" x 7-1/2" CC piece. To make unit 6b, sew a 9-1/2" x 8-1/2" GG piece to a 3-1/2" x 8-1/2" H piece. To make unit 6c, sew a 3-1/2" x 12-1/2" HH piece to a 3-1/2" x 7-1/2" GG piece. Join unit 6a to 6b and then add 6c to the left side. Section 6 should measure 15-1/2" x 19-1/2".



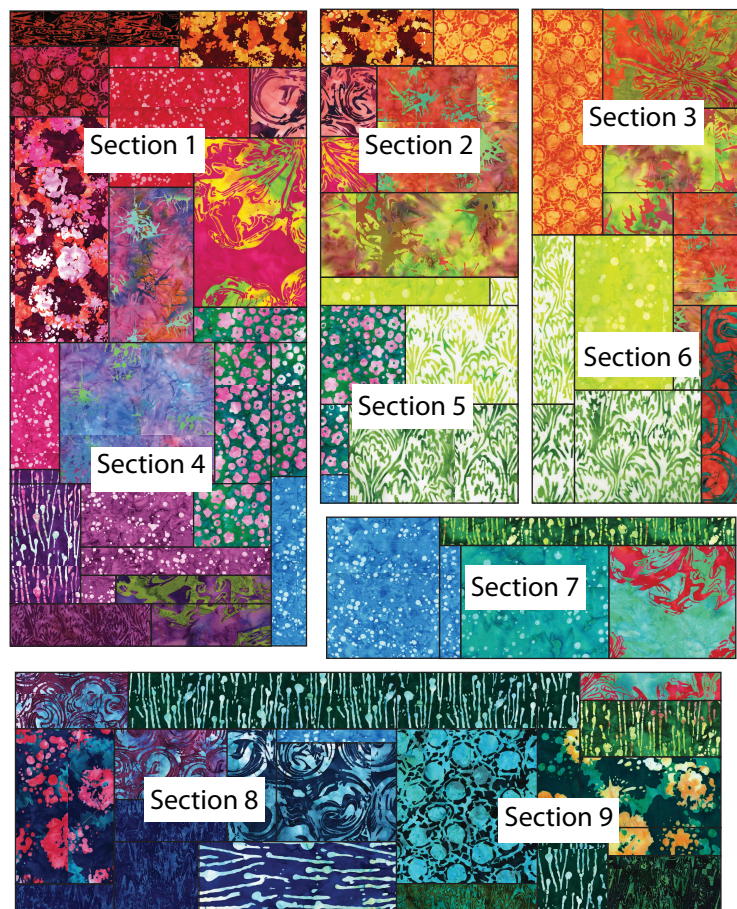
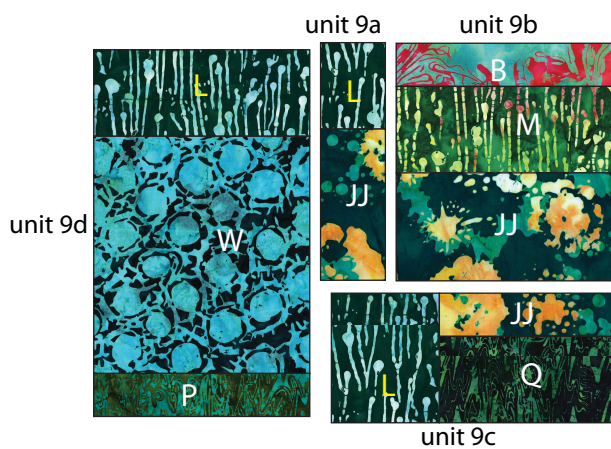
7. *Section 7:* To make unit 7a, sew together a 2" x 8-1/2" AA piece, an 11" x 8-1/2" BB piece, and a 9-1/2" x 8-1/2" B piece. Add a 21-1/2" x 2-1/2" M piece to the top. Sew an 8-1/2" x 10-1/2" AA piece to unit 7a. Section 7 should measure 29-1/2" x 10-1/2".



8. *Section 8:* To make unit 8a, sew an 8-1/2" x 5-1/2" F piece to an 8-1/2" x 3-1/2" O piece. To make unit 8b, sew a 9" x 1-1/2" AA piece to a 9" x 7-1/2" G piece. Add a 4" x 8-1/2" G piece to the left side. To make unit 8c, sew a 6-1/2" x 5-1/2" O piece to a 14-1/2" x 5-1/2" K piece. To make unit 8d, sew a 7-1/2" x 11-1/2" II piece to a 7-1/2" x 2-1/2" O piece. To make unit 8e, sew an 8-1/2" x 4-1/2" F piece to a 19-1/2" x 4-1/2" L piece. Join unit 8a to 8b; add 8c to the bottom and then 8d to the left. Sew 8e to the top. Section 8 should measure 27-1/2" x 17-1/2".



9. *Section 9:* To make unit 9a, sew a 3-1/2" x 4-1/2" L piece to a 3-1/2" x 7-1/2" JJ piece. To make unit 9b, sew a 10-1/2" x 2-1/2" B piece to a 10-1/2" x 4-1/2" M piece. Sew a 10-1/2" x 5-1/2" JJ piece to the bottom. To make unit 9c, sew an 8-1/2" x 2-1/2" JJ piece to an 8-1/2" x 4-1/2" Q piece. Sew a 5-1/2" x 6-1/2" L piece to the left side. To make unit 9d, sew a 10-1/2" x 4-1/2" L piece to a 10-1/2" x 11-1/2" W piece and a 10-1/2" x 2-1/2" P piece to the bottom. Join unit 9a to 9b. Add unit 9c to the bottom and unit 9d to the left side. Section 9 should measure 23-1/2" x 17-1/2".



Quilt Layout Diagram

10. To assemble the pieced background, refer to the Quilt Layout Diagram as you work. Sew Section 1 to the top of Section 4. Sew Section 2 to the top of Section 5. Sew Section 3 to the top of Section 6. Join Sections 2/5 to Sections 3/6 and then sew Section 7 to the bottom. Sew Section 1/4 to the left side. Sew Section 8 to the left of Section 9 and then add to the bottom to complete the pieced background. It should measure 50-1/2" x 62-1/2".

Add the Applique

1. Referring to the Placement Diagram, position the flower and leaf shapes on the pieced background and fuse in place, following manufacturer's directions.
2. If desired, use a straight stitch or decorative stitch to applique pieces in place.

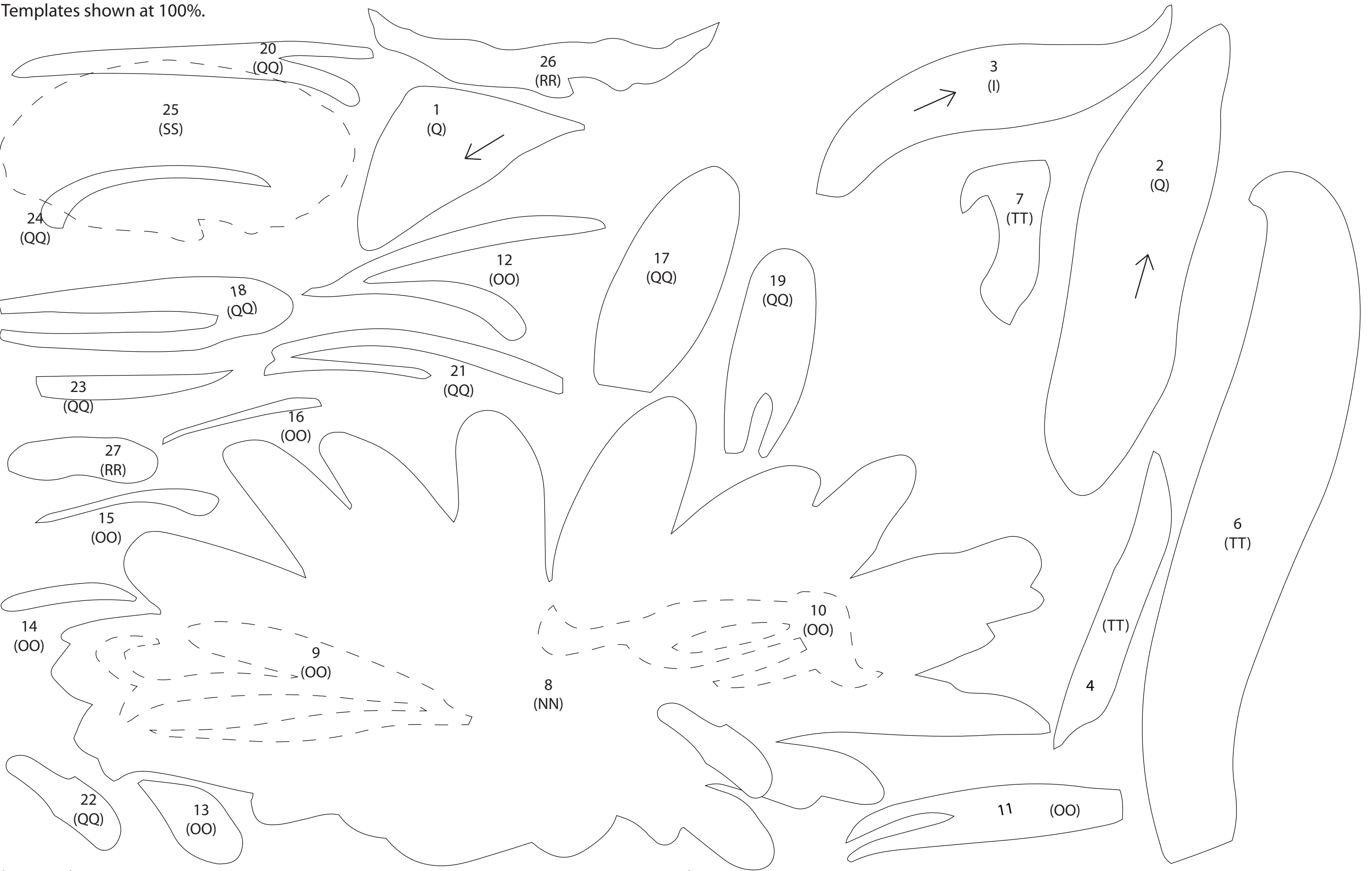
Finish the Quilt

1. Layer the quilt back right side down, batting, and quilt top right side up. Baste layers together and quilt as desired. Trim backing and batting to edge of quilt top.
2. Use the six 2-1/2" x 42" Fabric N strips to bind the quilt.

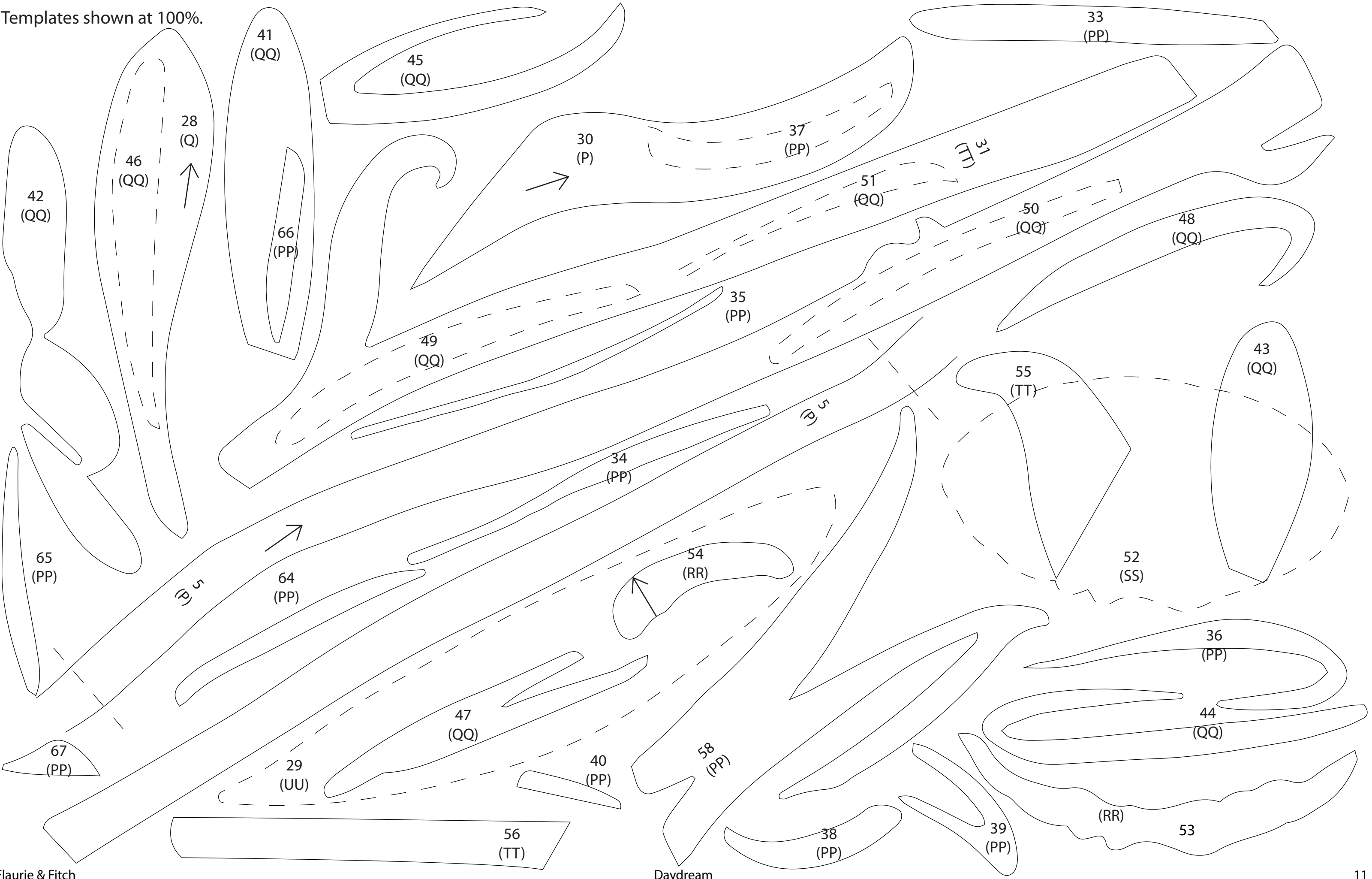


Applique Placement Diagram

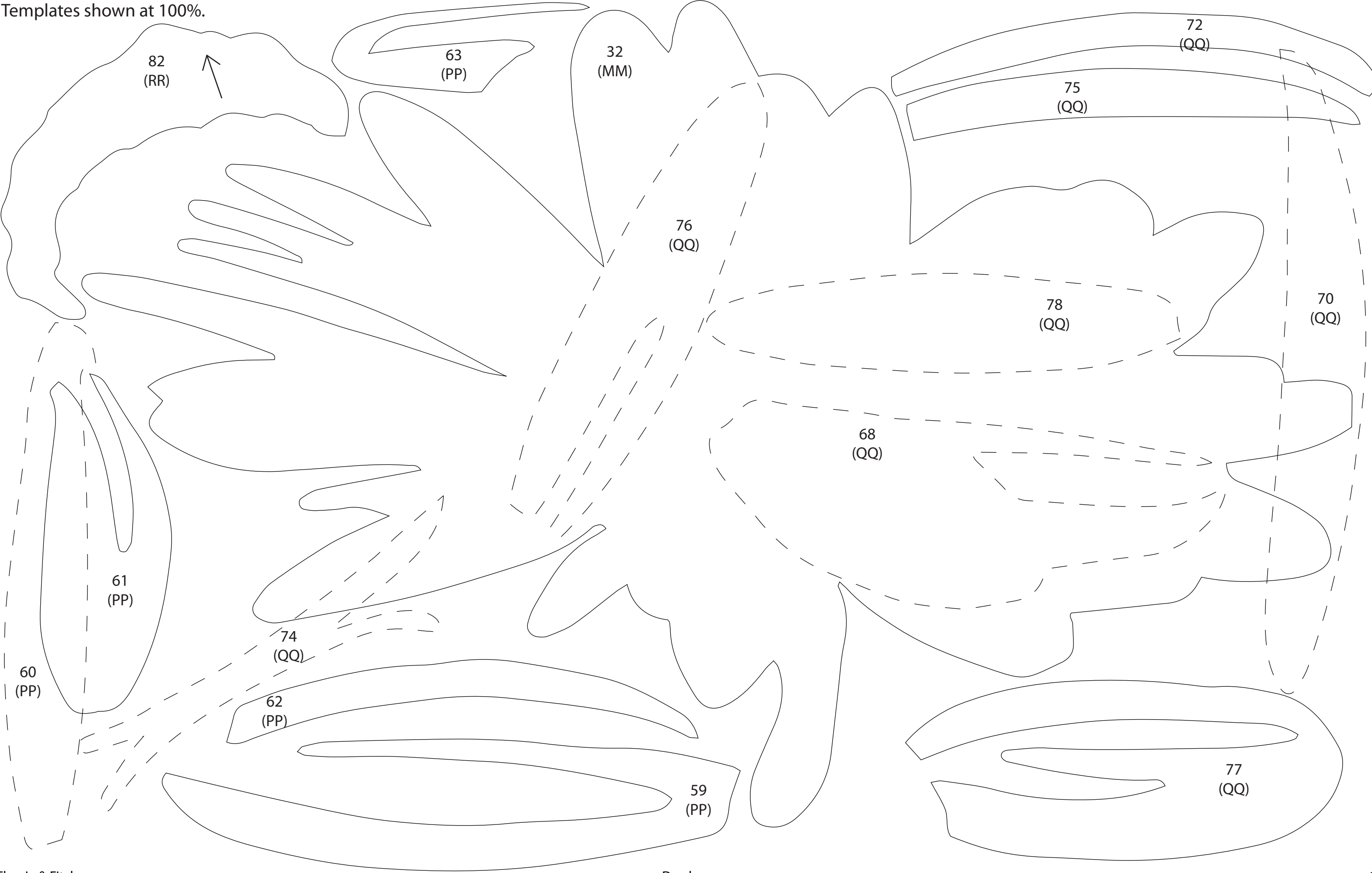
Templates shown at 100%.

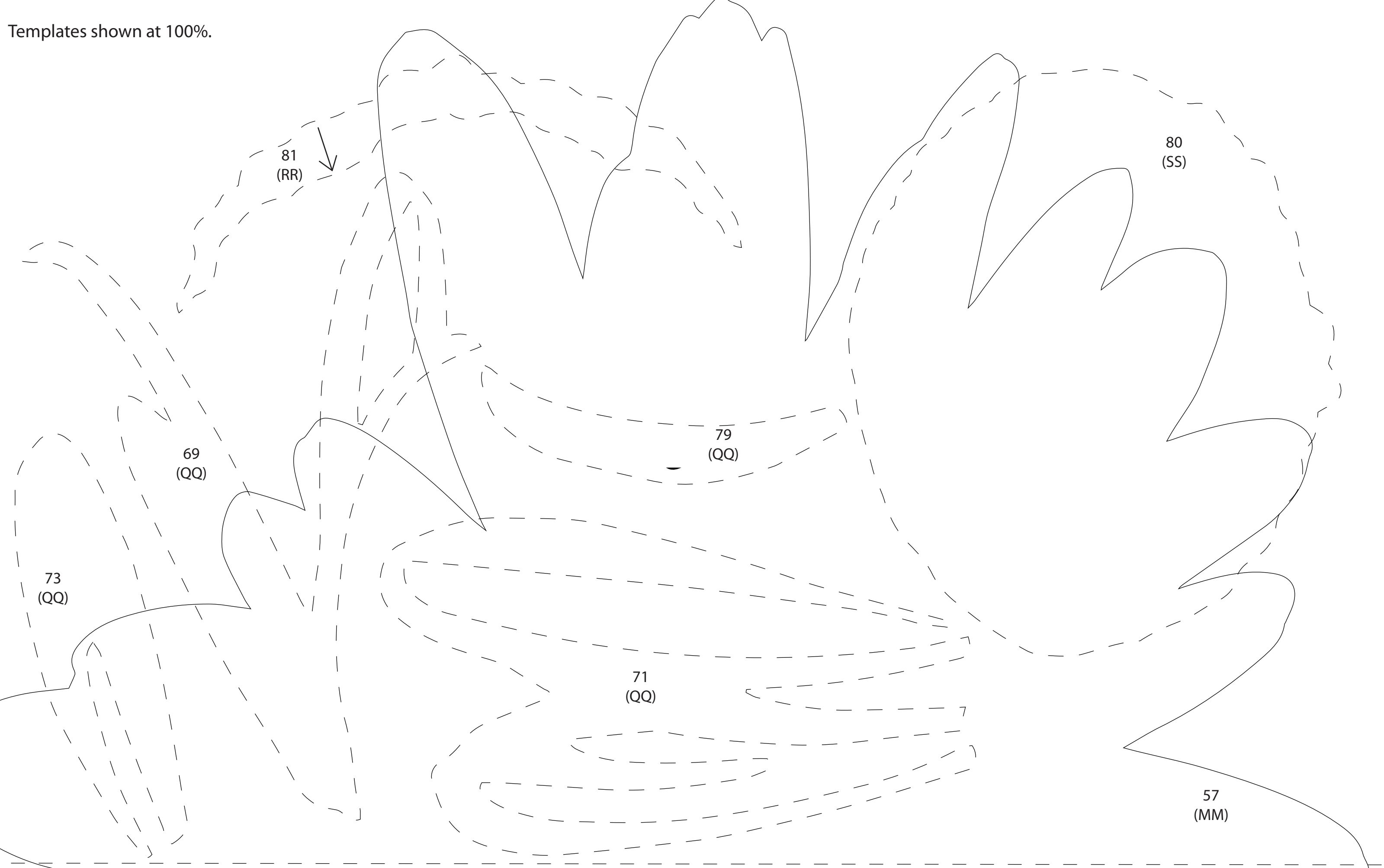


Templates shown at 100%.



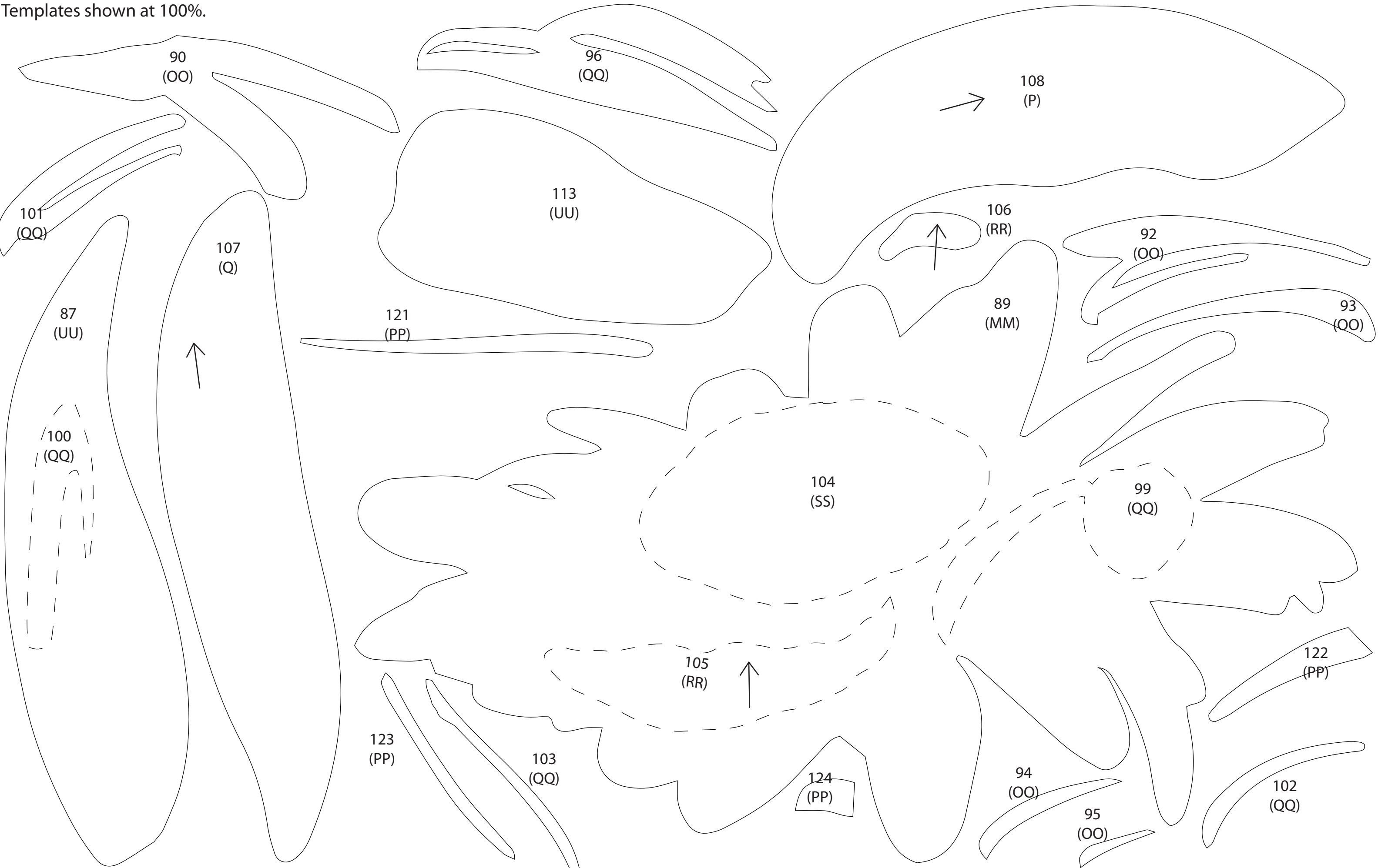
Templates shown at 100%.



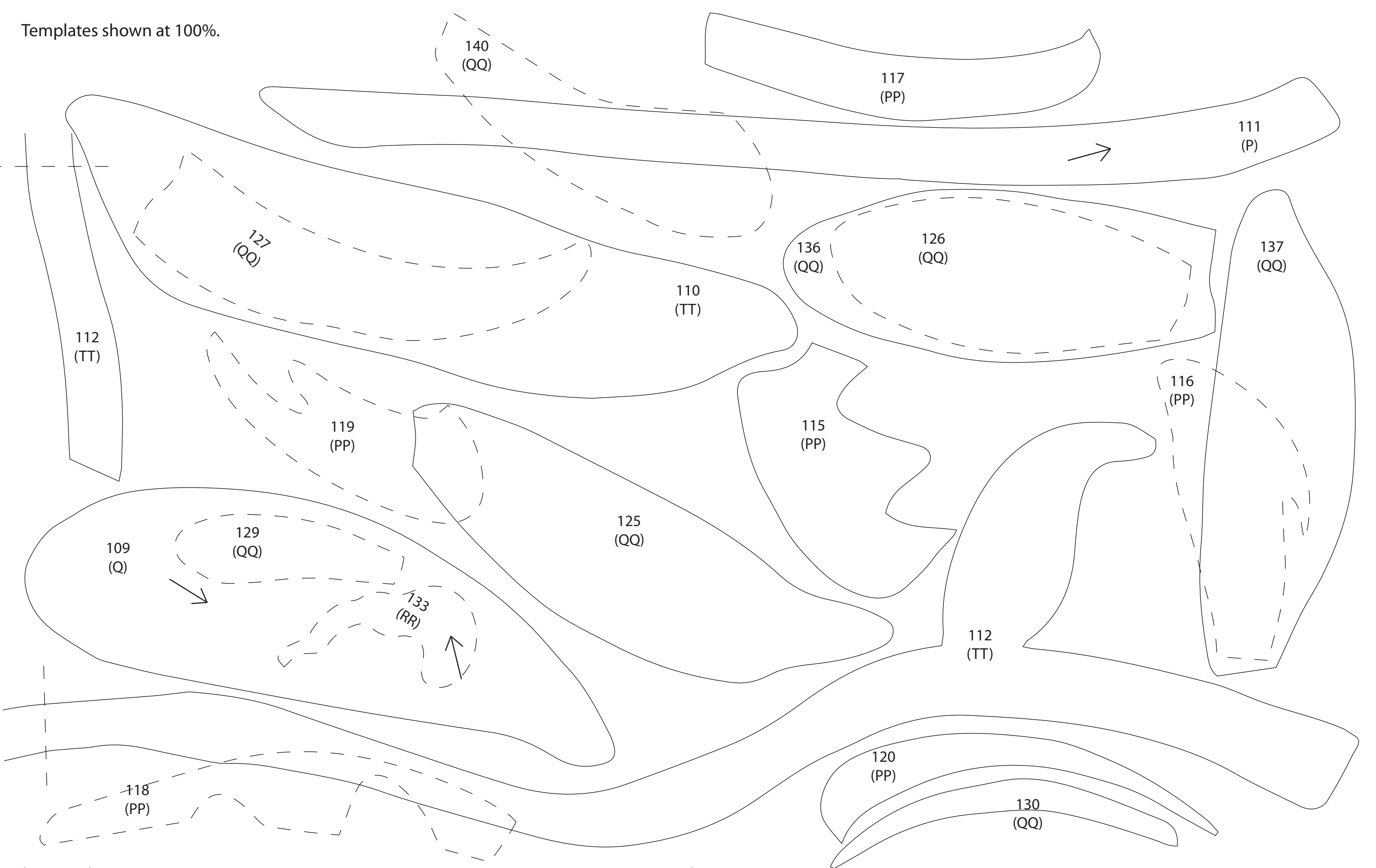


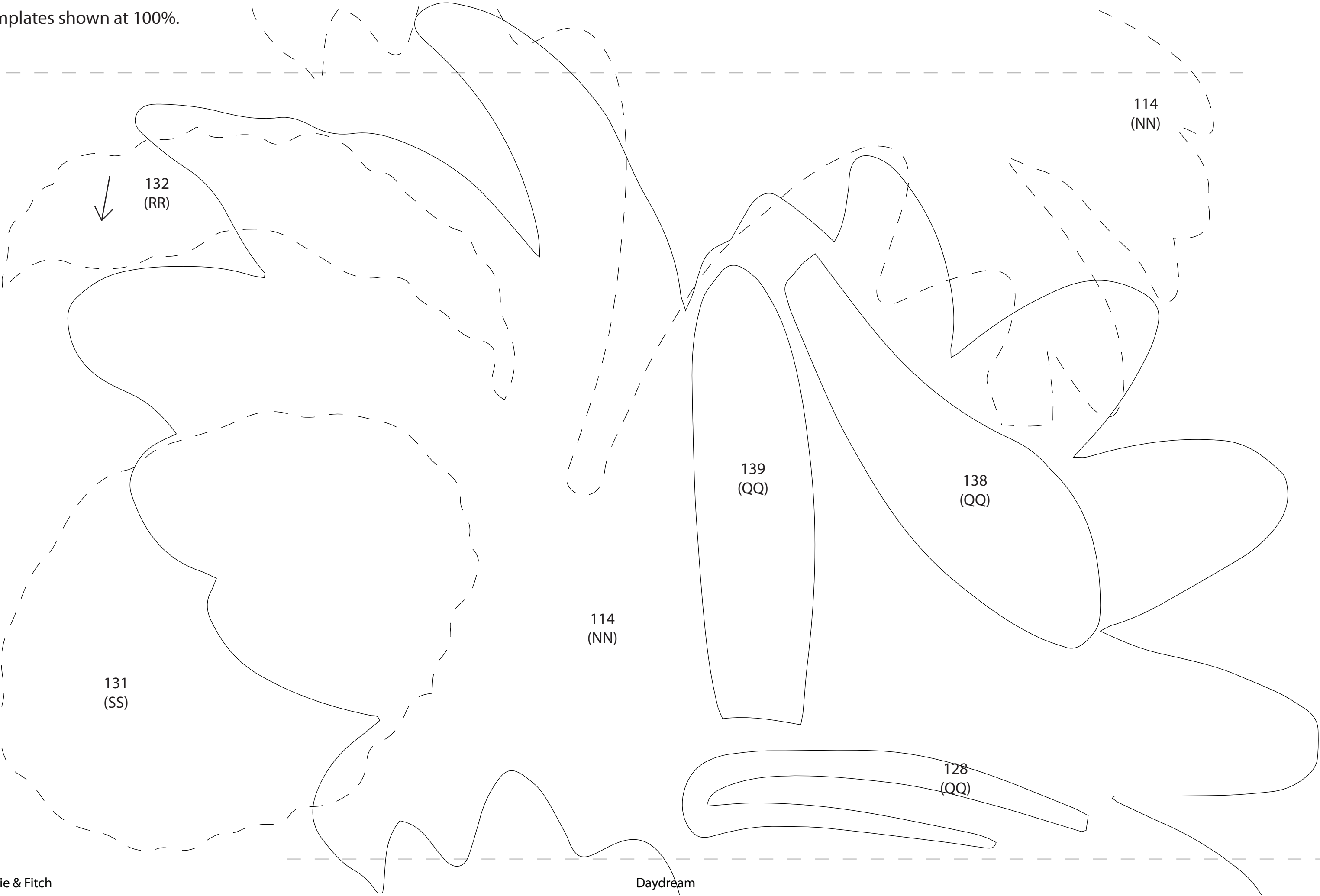


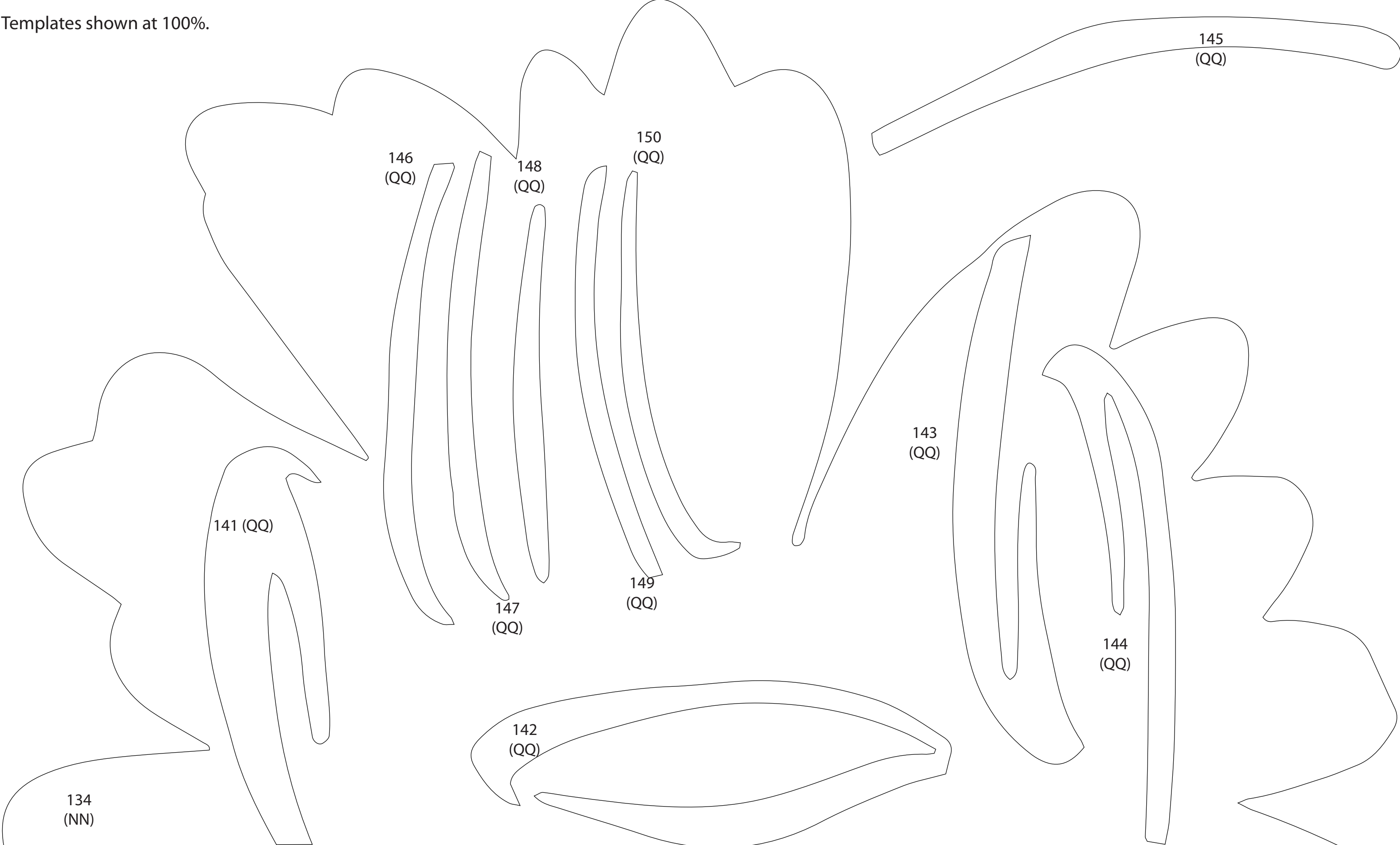
Templates shown at 100%.



Templates shown at 100%.







Templates shown at 100%.

